

Metallographic preparation of stainless steel

Application Notes

Corrosion resistant steels contain at least 11% chromium and are collectively known as “stainless steels”. Within this group of high alloy steels four categories can be identified: ferritic, martensitic, austenitic, and austenitic-ferritic (duplex) stainless steels. These categories describe the alloy’s microstructure at room temperature, which is largely influenced by the alloy composition.

The main characteristic of stainless steels is their corrosion resistance. This property can be enhanced by the addition of specific alloying elements, which have a further beneficial effect on other characteristics such as toughness and oxidation resistance.

For instance, niobium and titanium increase resistance against intergranular corrosion as they absorb the carbon to form carbides; nitrogen increases strength and sulphur increases machinability, because it forms small manganese sulphides which result in short machining chips. Due to their corrosion resistance and superior surface finishes stainless steels play a major part in the aircraft,



High performance stainless steel parts for the aircraft industry

chemical, medical and food industries, in professional kitchens, architecture and even jewelry.

Metallography of stainless steels is an important part of the overall quality control of the production process. The main metallographic tests are grain size measurement, identification of delta ferrite and sigma phase and the evaluation and distribution of carbides. In addition, metallography is used in failure analysis investigating corrosion/oxidation mechanisms.

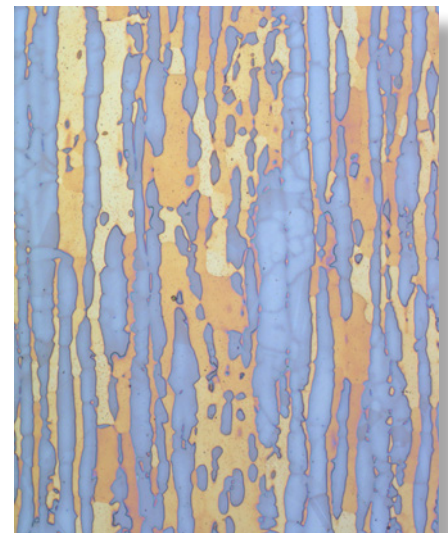


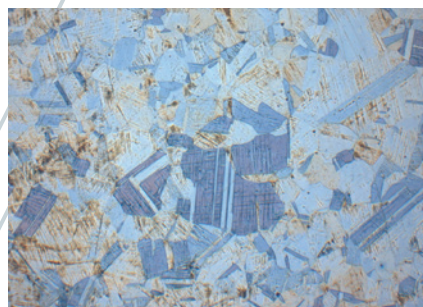
Fig. 1: Duplex steel etched electrolytically with 40% aqueous sodium hydroxide solution, showing blue austenite and yellow ferrite 150x

Difficulties during metallographic preparation

Grinding and polishing: Deformation and scratching in ferritic and austenitic stainless steels. Retention of carbides and inclusions.



Surface of stainless steel after 3µm polish, showing deformation from grinding DIC 25x



Insufficiently polished stainless steel after colour etching (Beraha II), showing deformation 100x

Solution:

Thorough diamond polishing and final polishing with colloidal silica or alumina.



Production and application of stainless steel

The production process of high alloy steels is a sophisticated process of melting and remelting. A mixture of iron and well sorted scrap is first melted in an electric arc furnace and then cast into ingot form or continuously cast into bloom or billet. For many applications these primary products can be further processed into bar, rod or plate form. For steels with higher quality demands, the primary product can be used as feedstock for a secondary steelmaking process. This secondary process can be a double or even triple remelt by vacuum induction melting plus vacuum arc remelting or electroslag remelting, which can also be done under pressure and protective gases.

The main purpose of this secondary process is to reduce impurities such as oxides, sulphides and silicates so that with successive remelts the degree of cleanliness increases and homogenous ingots with excellent mechanical and physical properties are produced.

Application

The corrosion resistance of stainless steels is based on alloying chromium with iron, and is dependant on the formation of a passive surface oxide layer, which rebuilds itself spontaneously when mechanically damaged.

A variety of different types of corrosion can occur, such as pitting, stress, intercrystalline or vibrational corrosion. Improved resistance against any specific form of attack can be provided by adding alloying elements other than chromium, for instance molybdenum, which improves resistance against pitting corrosion. The main alloys, properties and examples of applications of the four types of stainless steels are briefly described:

Ferritic stainless steels: are non heat treatable alloys with a low carbon content and 11-17% chromium.

Properties: magnetic, resistant to atmospheric corrosion, moderate strength and toughness.

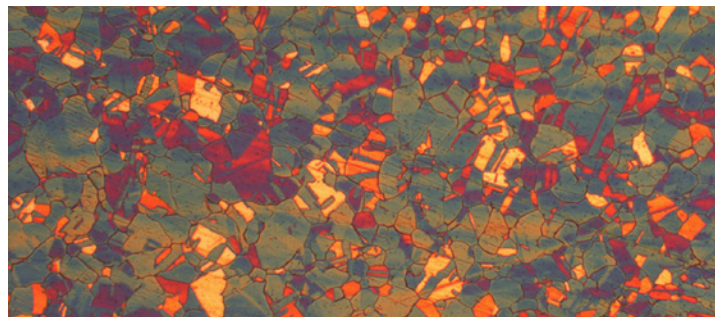
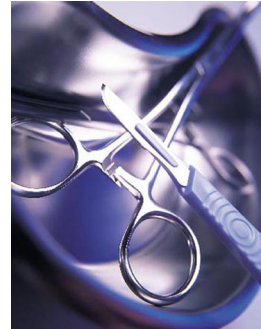
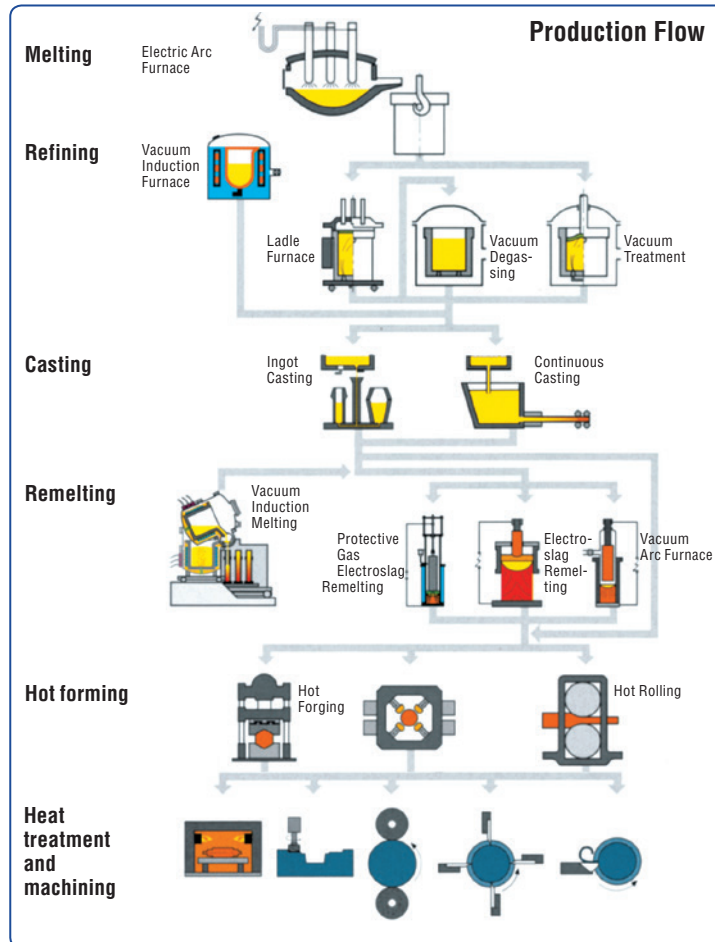


Fig.2: Austenitic steel, colour etched (Beraha II).

100x



Applications: magnetic valves, razor blades, car trim.

Martensitic stainless steels are heat treatable alloys with medium carbon content, 12-18% chromium and 2-4% nickel. Properties: high corrosion resistance, and high temperature and creep resistance. Applications: scalpels, knives, hooks and tweezers in medical applications, drive systems and high performance parts for airplanes.

Austenitic stainless steels are not heat treatable, have 0.03-0.05 % carbon, main alloying elements are chromium (17-24 %), nickel (8-25%) and molybdenum (2-4%); titanium and niobium are added for carbide forming. Properties: high ductility, high corrosion resistance, resistant to oxidizing acids, alkalis, very good cold forming properties, easy to work and machine.

Applications: screws, bolts and implants, low temperature applications, vessels and pipes in the chemical, pharmaceutical and food industries, kitchen utensils.

Austenitic-ferritic steels, (Duplex) have a low carbon content and generally higher chromium (21-24%) and lower nickel content (4-6%) than austenitic steels, and 2-3% molybdenum.

Properties: fatigue resistance in corrosive media, good resistance against stress corrosion.

Applications: equipment for chemical, environmental and offshore industries, architecture.



Difficulties in the preparation of stainless steels

Ferritic stainless steels are soft and austenitic steels are ductile. Both are prone to mechanical deformation. Final polishing usually leaves these steels highly reflective, however, if they are not thoroughly prepolished, deformation can reappear after etching (Fig. 3).

Due to their hardness, martensitic steels are relatively easy to polish. In general, care should be taken to preserve the carbides.

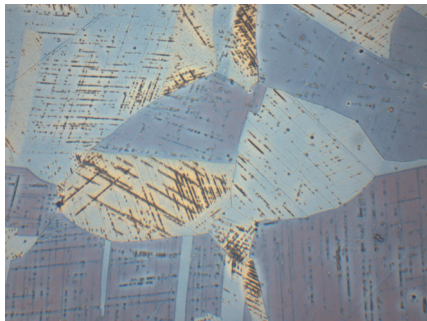


Fig. 3: Austenitic steel insufficiently polished showing deformation after etching (Beraha II) 500x

Recommendations for the preparation of stainless steels

It is strongly recommended that for the soft and ductile stainless steels the use of very coarse grinding foil/papers and high pressures should be avoided, as this can result in deep deformation. As a general rule, the finest possible grit, consistent with the sample area and surface roughness, should be used for plane grinding. Fine grinding is carried out with diamond on a rigid disc (MD-Largo) or, as an alternative for some types of stainless steels, on a MD-Plan cloth. Fine grinding is followed by a thorough diamond polish on a medium soft cloth, and the final polish with colloidal silica (OP-S), or alumina (OP-A) removes the fine scratches. This step should be very thorough and it can take up to several minutes. A good final polish increases the chance for a better contrast (see "Etching").

Any deformation from the first grinding step, which is not removed by fine grinding, will leave its traces and can not be removed by final polishing.

Table 1 shows a preparation method for stainless steel samples, 30 mm mounted, on the semi-automatic Tegramin 300 mm diameter. Table 2 shows a preparation method for 6 stainless steel samples, 65x30 mm, cold mounted or unmounted using Struers MAPS or AbraPlan/AbraPol, 350 mm diameter.

Electrolytic polishing

For research work or fast, general structure check, electrolytical polishing and etching can be an alternative to mechanical polishing of stainless steels, as it does not leave any mechanical deformation.

Electrolytic polishing gives excellent results for checking the microstructure (Fig. 4), but it is not suited to identify carbides. They are washed out or appear enlarged.

Before electrolytic polishing, the samples have to be ground to 1000# on silicon carbide foil/paper. The finer the initial surface the better the results of the electrolytical polish (see preparation method below).

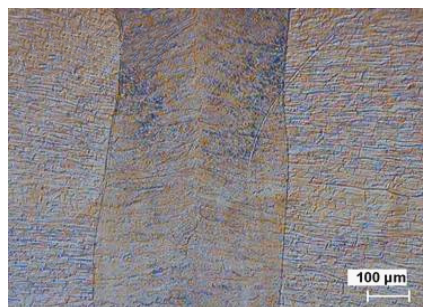


Fig. 4: Stainless steel weld, polished and etched electrolytically, DIC

Electrolyte: A3
Area: 1cm²
Voltage: 35 V
Flowrate: 13
Time: 25 sec

External etching with stainless steel etching dish:

10% aqueous oxalic acid
Voltage: 15V
Time: 60 sec

Preparation method for electrolytic polishing and etching of stainless steel. Grinding on SiC foil/paper 320#, 500# and 1000#.

Grinding

Step		PG	FG
Surface		Foil/Paper	MD-Largo
Abrasive	Type	SiC	Diamond
	Size	#220	9 μm
Suspension/Lubricant		Water	DiaPro Allegro/Largo 9
rpm		300	150
Force [N]/specimen		25	40
Time (min)		As needed	5

Polishing

Step		DP	OP
Surface		MD-Dac	MD-Chem
Abrasive	Type	Diamond	Silica/Alumina
	Size	3 μm	0.04/0.02 μm
Suspension/Lubricant		DiaPro Dac 3	OP-S NonDry OP-A
rpm		150	150
Force [N]/specimen		20	15
Time (min)		4	2-3

Table 1: Preparation method for stainless steel samples, 30 mm diameter mounted, on the semi-automatic Tegramin, 300 mm diameter.









As an alternative to DiaPro polycrystalline diamond suspension P can be used together with green/blue lubricant.

Etching

Etching stainless steels requires some experience and patience. The literature for etchants is extensive, and it is recommended to try a variety in order to set up an individual stock of solutions appropriate for the particular material which is regularly prepared in the laboratory.

By virtue of the fact that stainless steels are highly corrosion resistant, very strong acids are required to reveal their structure. Standard safety precautions have to be used when handling these etchants. In many laboratories the etchants mentioned in the literature will be modified according to the material to be etched or even out of personal preference. For good etching results, a sufficient final oxide polishing is essential. Following are some etchants which have proved successful in every day, routine applications.

Grinding

Step		PG 	FG 
	Surface	Stone 3A36	MD-Largo
	Abrasive	Type	Al ₂ O ₃
		Size	#150
	Suspension/ Lubricant	Water	DiaPro Allegro/Largo 9
	rpm	1450	150
	Force [N]/ specimen	50	50
	Time (min)	As needed	9

Polishing










Step		DP 1 	DP 2 	OP 
	Surface	MD-Mol APS	MD-Nap	MD-Chem
	Abrasive	Type	Diamond	Diamond
		Size	3 µm	1 µm
	Suspension/ Lubricant	DiaPro Mol B 3	DiaPro Nap B 1	OP-S NonDry OP-A
	rpm	150	150	150
	Force [N]/ specimen	50	25	25
	Time (min)	6	4	2-3

Table 2: Preparation method for stainless steel samples, 65x30mm, cold mounted or unmounted using Struers MAPS or AbraPlan/AbraPol, 350 mm diameter.

As an alternative to DiaPro polycrystalline diamond suspension P can be used together with green/blue lubricant.

Chemical etching

Caution: Always follow the recommended safety precautions when working with chemical reagents.

For martensitic steels

- 925 ml ethanol
- 25 g picric acid
- 50 ml hydrochloric acid

For austenitic steels

- 1) Swab etch:
 - 500 ml distilled water
 - 300 ml hydrochloric acid
 - 200 ml nitric acid
 - 50 ml of a saturated iron-III-chloride solution
 - 2.5 g copper-II-chloride
- 2) 100 ml water
- 300 ml hydrochloric acid
- 15 ml hydrogen peroxide (30%)

- 3) V2A etchant:
 - 100 ml water
 - 100 ml hydrochloric acid
 - 10 ml nitric acid
 Etch at room temperature or up to 50°C

Color etchant Beraha II:

- Stock solution
 - 800 ml distilled water
 - 400 ml hydrochloric acid
 - 48 g ammonium bifluoride
 To 100 ml of this stock solution add 1-2 g potassium metabisulfite for etching.

Electrolytic etching

For austenitic-ferritic steels (Duplex)
40% aqueous sodium hydroxide solution

All stainless steels:
10% aqueous oxalic acid



Structure interpretation

Ferritic stainless steels do not respond to heat treatment. Their properties however can be influenced by cold working. They are magnetic at room temperature. The microstructure in the annealed condition consists of ferrite grains in which fine carbides are embedded. Ferritic steels used for machining contain a large amount of manganese sulfides to facilitate free cutting (Fig. 5).

Martensitic stainless steels respond to heat treatment. Martensite is formed through rapid cooling and properties can then be optimised by subsequent tempering treatment. The alloys are magnetic. Depending on the thermal treatment the microstructure can range from pure martensitic structure to fine tempered martensite. Different alloys and various dimensions of semi-finished products require complex heat treatment temperatures and times.

Delta ferrite (Fig. 6) is usually an unwanted phase, because long annealing times of steels with high chromium content, at temperatures between 700 and 950°C, can change the delta ferrite into the hard and brittle iron-chromium intermetallic sigma phase.

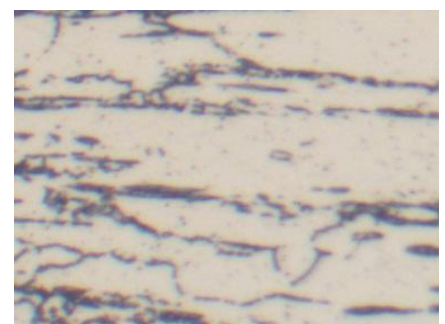


Fig. 5: Ferritic stainless steel with manganese sulfides and strings of small carbides, etched electrolytically with 10% oxalic acid 200x



Fig. 6: Tempered martensitic stainless steel with delta ferrite, etched with picric acid 75x

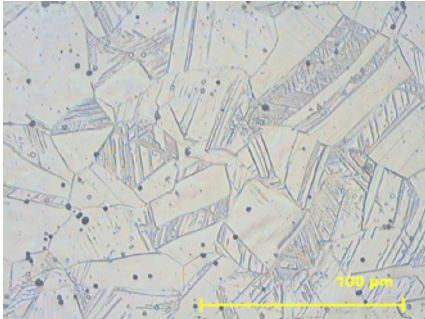


Fig. 7: Cold worked austenitic steel showing twinning, etched with V2A etchant.

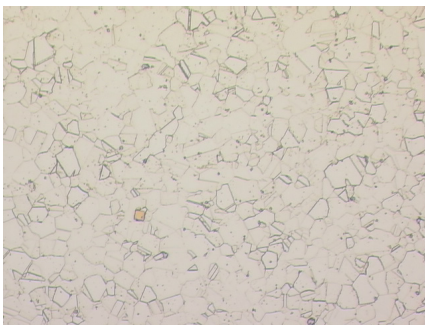


Fig. 8: Austenite with carbides and some titanium carbon nitrides 200x

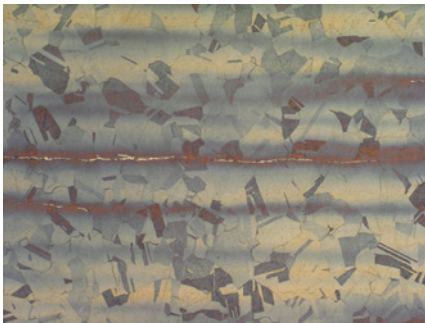


Fig. 9: Austenitic steel with strings of delta ferrite, showing microsegregations. Blue areas: depletion of alloying elements. 125x

Heating up to 1050°C and subsequent quenching removes the sigma phase and with it the embrittlement.

Austenitic stainless steels do not respond to thermal treatment, instead, rapid cooling results in the production of their softest condition. In this state they are non-magnetic and their properties are influenced by cold working. The microstructure of these steels consists of austenite grains which may exhibit twinning (Fig. 7). Exposure of these steels to elevated temperatures in the region of 600-700°C can result in the formation of

complex carbides within the austenite grains. This leads to an impoverishment of chromium in the austenite solid solution, which increases the susceptibility to intergranular corrosion or oxidation.

By reducing the carbon to below 0.015% and adding small amounts of titanium or niobium, the risk of intergranular corrosion is reduced, as these elements form carbides in preference to the chrome (Fig. 8).

Delta ferrite can appear due to critical heat treatment conditions in martensitic or cold working of austenitic steels (Fig. 9).

Austenitic-ferritic stainless steels (Duplex) consist of ferrite and austenite. Electrolytic etching in a 40% caustic soda solution reveals the structure and the correct percentage of each phase can be estimated (see Fig.1, and Fig. 10 below). These steels are ductile and are specifically used in the food, paper and petroleum industries.

Summary

Stainless steels are corrosion resistant steels with high chromium and nickel contents. Ferritic and stainless steels are soft, respectively ductile, and are prone to mechanical deformation and scratching during metallographic preparation. In addition, carbides can not always be retained.



For a successful mechanical polish, it is suggested that

- coarse abrasives for plane grinding are avoided.
- fine grinding and polishing with diamond should be thorough and ensure removal of all deformation from plane grinding.
- a final oxide polish with colloidal silica or alumina should be carried out to provide a deformation free surface.

A four step procedure, completed on automatic preparation equipment, gives good and reproducible results. Stainless steels are difficult to etch chemically and the recommended etchants are very corrosive and require careful handling.

Alternatively, electrolytical polishing and etching is recommended, which gives a deformation free surface, but does not retain carbides.

Fig.10: Forged duplex steel showing blue ferrite, white austenite and fine needles of sigma phase, etched electrolytically with 40% aqueous sodium hydroxide.

150x

Struers ApS

Pederstrupvej 84
 DK-2750 Ballerup, Denmark
 Phone +45 44 600 800
 Fax +45 44 600 801
 struers@struers.dk
 www.struers.com

NETHERLANDS

Struers GmbH Nederland
 Zomerdijk 34 A
 3143 CT Maassluis
 Telefoon +31 (10) 599 7209
 Fax +31 (10) 5997201
 netherlands@struers.de

NORWAY

Struers ApS, Norge
 Sjøskogenveien 44C
 1407 Vinterbro
 Telefon +47 970 94 285
 info@struers.no

AUSTRIA

Struers GmbH
 Zweigniederlassung Österreich
 Betriebsgebiet Puch Nord 8
 5412 Puch
 Telefon +43 6245 70567
 Fax +43 6245 70567-78
 austria@struers.de

POLAND

Struers Sp. z o.o.
 Oddział w Polsce
 ul. Jasnogórska 44
 31-358 Kraków
 Phone +48 12 661 20 60
 Fax +48 12 626 01 46
 poland@struers.de

ROMANIA

Struers GmbH, Sucursala Bucuresti
 Str. Preciziei nr. 6R
 062203 sector 6, Bucuresti
 Phone +40 (31) 101 9548
 Fax +40 (31) 101 9549
 romania@struers.de

SWITZERLAND

Struers GmbH
 Zweigniederlassung Schweiz
 Weissenbrunnstraße 41
 CH-8903 Birmsdorf
 Telefon +41 44 777 63 07
 Fax +41 44 777 63 09
 switzerland@struers.de

SINGAPORE

Struers Singapore
 627A Aljunied Road,
 #07-08 BizTech Centre
 Singapore 389842
 Phone +65 6299 2268
 Fax +65 6299 2661
 struers.sg@struers.dk

SPAIN

Struers España
 Camino Cerro de los Gamos 1
 Building 1 - Pozuelo de Alarcón
 CP 28224 Madrid
 Teléfono +34 917 901 204
 Fax +34 917 901 112
 struers.es@struers.es

FINLAND

Struers ApS, Suomi
 Hietalahdenranta 13
 00180 Helsinki
 Puhelin +358 (0)207 919 430
 Faksi +358 (0)207 919 431
 finland@struers.fi

SWEDEN

Struers Sverige
 Box 20038
 161 02 Bromma
 Telefon +46 (0)8 447 53 90
 Telefax +46 (0)8 447 53 99
 info@struers.se

UNITED KINGDOM

Struers Ltd.
 Unit 11 Evolution @ AMP
 Whittle Way, Catcliffe
 Rotherham S60 5BL
 Tel. +44 0845 604 6664
 Fax +44 0845 604 6651
 info@struers.co.uk

USA

Struers Inc.
 24766 Detroit Road
 Westlake, OH 44145-1598
 Phone +1 440 871 0071
 Fax +1 440 871 8188
 info@struers.com

AUSTRALIA & NEW ZEALAND

Struers Australia
 27 Mayneview Street
 Milton QLD 4064
 Australia
 Phone +61 7 3512 9600
 Fax +61 7 3369 8200
 info.au@struers.dk

BELGIUM (Wallonie)

Struers S.A.S.
 370, rue du Marché Rollay
 F- 94507 Champigny
 sur Marne Cedex
 Téléphone +33 1 5509 1430
 Télécopie +33 1 5509 1449
 struers@struers.fr

BELGIUM (Flanders)

Struers GmbH Nederland
 Zomerdijk 34 A
 3143 CT Maassluis
 Telefoon +31 (10) 599 7209
 Fax +31 (10) 5997201
 netherlands@struers.de

CANADA

Struers Ltd.
 7275 West Credit Avenue
 Mississauga, Ontario L5N 5M9
 Phone +1 905-814-8855
 Fax +1 905-814-1440
 info@struers.com

CHINA

Struers Ltd.
 No. 1696 Zhang Heng Road
 Zhang Jiang Hi-Tech Park
 Shanghai 201203, P.R. China
 Phone +86 (21) 6035 3900
 Fax +86 (21) 6035 3999
 struers@struers.cn

CZECH REPUBLIC & SLOVAKIA

Struers GmbH Organizační složka
 vědeckotechnický park
 Ptilpeřská 1920,
 CZ-252 63 Roztoky u Prahy
 Phone +420 233 312 625
 Fax +420 233 312 640
 czechrepublic@struers.de
 slovakia@struers.de

GERMANY

Struers GmbH
 Carl-Friedrich-Benz-Straße 5
 D- 47877 Willich
 Telefon +49 (0) 2154 486-0
 Fax +49 (0) 2154 486-222
 verkauf@struers.de

FRANCE

Struers S.A.S.
 370, rue du Marché Rollay
 F-94507 Champigny
 sur Marne Cedex
 Téléphone +33 1 5509 1430
 Télécopie +33 1 5509 1449
 struers@struers.fr

HUNGARY

Struers GmbH
 Magyarországi Fióktelepe
 2040 Budaörs
 Szabadság utca 117
 Phone +36 2380 6090
 Fax +36 2380 6091
 Email: hungary@struers.de

IRELAND

Struers Ltd.
 Unit 11 Evolution @ AMP
 Whittle Way, Catcliffe
 Rotherham S60 5BL
 Tel. +44 0845 604 6664
 Fax +44 0845 604 6651
 info@struers.co.uk

ITALY

Struers Italia
 Via Monte Grappa 80/4
 20020 Arese (MI)
 Tel. +39-02/38236281
 Fax +39-02/38236274
 struers.it@struers.it

JAPAN

Marumoto Struers K.K.
 Takanawa Muse Bldg. 1F
 3-14-13 Higashi-Gotanda,
 Shinagawa
 Tokyo
 141-0022 Japan
 Phone +81 3 5488 6207
 Fax +81 3 5488 6237
 struers@struers.co.jp

Application
Notes

Metallographic preparation of stainless steel

Elisabeth Weidmann, Struers A/S, Copenhagen
 Anne Guesnier, Struers A/S, Copenhagen
 Bill Taylor, Struers, Ltd., Glasgow, UK.

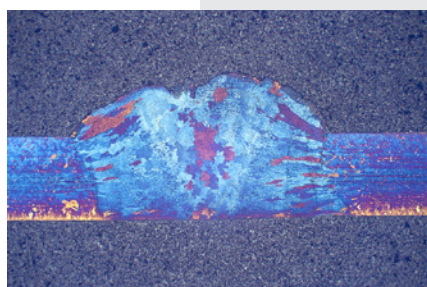
Acknowledgements

We wish to thank Böhler Edelstahl GmbH, Kapfenberg, Austria, for generously supplying information, sample material, and the permission to reproduce the photo of parts on page 1 and the diagram of production flow on page 2. Special thanks go to J. Hofstätter for the co-operation and to A. Dreindl for contributing micrographs Figs. 1, 2, 6, 9 and 10.

We thank Dr. H. Schnarr, Struers GmbH, Willich, Germany, for micrographs Figs. 4 and 7.

Bibliography

Schumann, VEB Deutscher Verlag für Grundstoffindustrie, Leipzig 1968
 Werkstoffkunde und Werkstoffprüfung, W. Domke, Verlag W. Giradet, Essen, 1977
 Metals Handbook, Desk Edition, ASM, Metals Park, Ohio, 44073, 1985
 Color Metallography, E. Beraha, B. Shpigler, ASM, Metals Park, Ohio, 44073, 1977
 Handbuch der metallographischen Ätzverfahren, M.Beckert, H. Klemm, VEB Deutscher Verlag für Grundstoffindustrie, Leipzig, 1976
 Metallography, Principles and Practice, George F. VanderVoort, McGraw-Hill Book Company, 1984
 Merkblatt 821, Edelstahl Rostfrei-Eigenschaften Informationsstelle Edelstahl Rostfrei, Düsseldorf, BRD
 Metallographic instructions for color etching by immersion, E. Weck, E. Leistner, Deutscher Verlag für Schweisstechnik (DVS), Düsseldorf, 1983



Stainless steel weld etched according to Beraha II.

20x