



## **Fully automatic, PC-controlled preparation system with a unique graphical user interface**

MAPS-2 is the ultimate solution for automatic preparation of materialographic specimens. A modular system which is tailored exactly to the user's specific requirements. MAPS-2 takes care of the entire preparation process - from plane grinding to final polishing – including cleaning and drying. The preparation quality is excellent, and due to the precise control of all preparation parameters and consumption of abrasives and lubricants, the reproducibility is second to none. Another consequence of controlled preparation is considerable savings in preparation costs.

Modularity means flexibility. MAPS-2 is an obvious choice for high capacity preparation. Whatever the requirements are, a MAPS-2 system can be designed to meet your needs.

- **Tailor-made solution**
- **High volume preparation**
- **Excellent preparation quality**
- **Outstanding reproducibility**
- **Considerable savings in manpower and consumables**
- **Very easy and intuitive operation**

# Modular Automatic Preparation Systems = MAPS-2

MAPS-2 consists of modules, each with two work stations, one cleaning station and a specimen holder arm. Accessories such as dosing units, an additional recirculation cooling unit, level indicators for consumables, etc. differ according to the configuration of each MAPS-2 system. Conveyors transport the specimen holders from unit to unit. Suspensions and lubricants are stored in easily accessible modules.

## Almost endless combination possibilities

The MAPS-2 modules can be configured in numerous different ways, depending on the requirements. This is the consequence of modularity taken to its logical extreme: each MAPS-2 system is configured on the basis of a thorough analysis of the user's specific needs.

## Very high efficiency

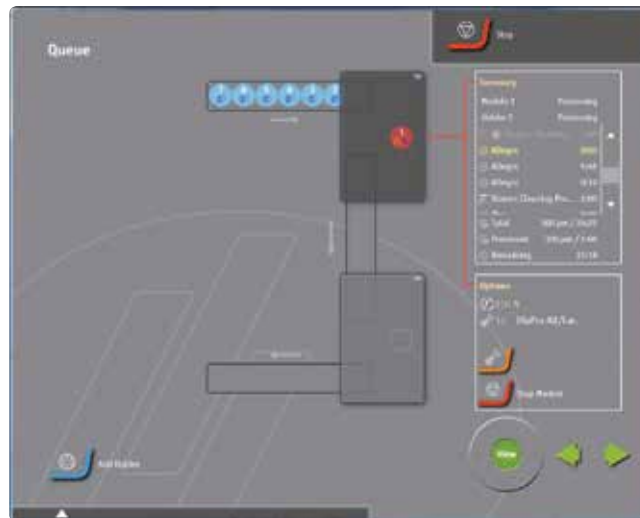
A steady flow of specimen holders can pass through MAPS-2. While the second module takes care of polishing, the first module is already busy plane grinding the next batch of specimens. A special queue function makes it possible to prepare different materials using different preparation methods. The queue function ensures an extremely fast throughput and eliminates all bottleneck problems, even at high volume preparation.

## Remote diagnostics and software updates

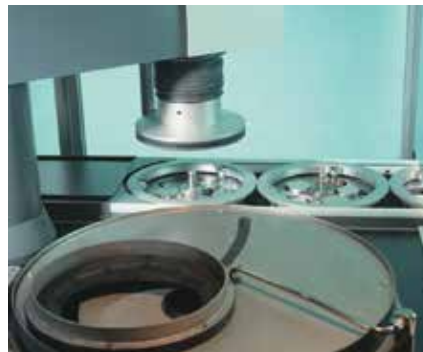
Maps-2 can be connected to a Local Area Network and can thus be accessed via the Internet. This enables Struers service engineers to remotely check the condition of Maps-2 and detect any errors. Possible software updates can also be carried out remotely, reducing machine downtime to an absolute minimum.

## Reduce preparation costs More time for demanding work

MAPS-2 takes care of the entire preparation process, even when it comes to the most complex specimens, leaving the operator time for other chores. In many cases, materialographic preparation has been a bottleneck. MAPS-2 eliminates this problem and leaves plenty of time for the one task which has not yet been satisfactorily automated: microscopic examination and evaluation of a materialographic structure.



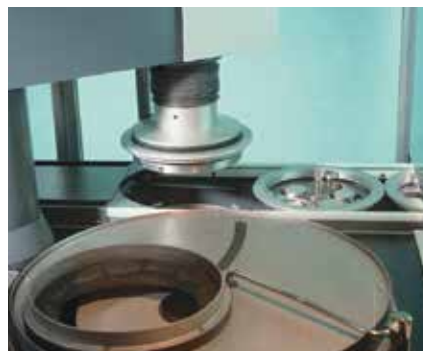
1. Six specimen holders queue up in the conveyor leading into MAPS-2



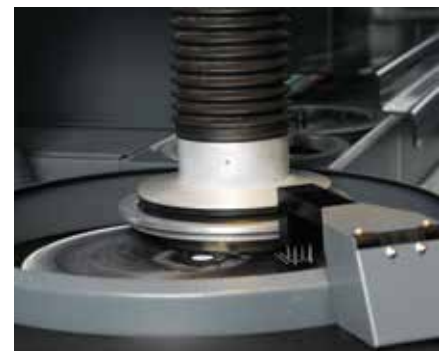
2. Specimen holders are fed into the first position - plane grinding - by conveyor



5. When the grinding is completed, the specimen holder is carried to the cleaning chamber



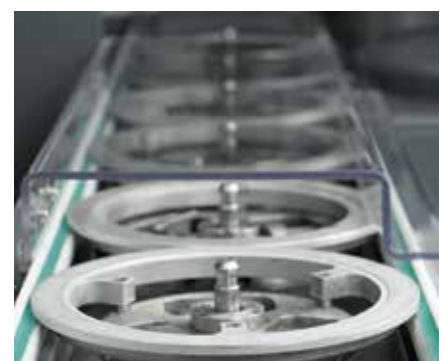
3. The specimen holders are collected from the conveyor, using a special lifting device



6. After fine grinding the specimen holder moves on to polishing



4. Grinding is now in operation. The next specimen holders are ready for collection



7. The finished specimen holder is moved to the conveyor, where it can be collected by the metallographer for microscopic examination



*Peristaltic pumps guarantee precise dosing of suspension and lubricant, and built in weighing cells continuously monitor the liquid level in the bottles. If necessary, the manual dosing buttons can be used to apply additional lubricant or suspension during the process.*



### Reduce preparation costs with MAPS-2

Automation not only means unique reproducibility and high quality – it also implies large cost savings. Within the world of materialography it is gradually realized that the initial cost of automatic equipment is more than counterbalanced by savings in time, labour and consumables. Materialographic preparation employs costly diamond products. Due to precise, automatic control of consumables consumption, MAPS-2 takes care that exactly the right amount is used – no more, no less.

### Touch-screen controlled operation

MAPS-2 is programmed and operated from a large touch-screen. A single tap on the screen inserts a new specimen holder. No further action is necessary when the method is the same as the previous one. To select a different method another tap opens the methods window from where all existing methods can be recalled immediately. New methods can be programmed instantly and also the configuration of the machine can be changed on the fly. The touch screen can be mounted either on the right (default) or left hand side of Module 1.

Additionally it is also possible to have a separate power supply so that the built-in PC and the touch screen can be operated even if one of the modules is dysfunctional.

### High capacity specimen production

Quality control is more and more integrated into the production area. This makes new demands to the preparation equipment within the fields of reliability and safety. MAPS-2 is prepared for a rough life – working around the clock in an industrial environment. Sensors constantly monitor the process, ensuring a

smooth and uninterrupted preparation process. In case of shutdown the operator is specifically advised which consumables to refill, etc. While MAPS-2 is working in the production area, the operator may monitor the process from the office via the LAN. With MAPS-2 as the foundation of current quality control, adjustments in the production can be carried out with minimal delay.

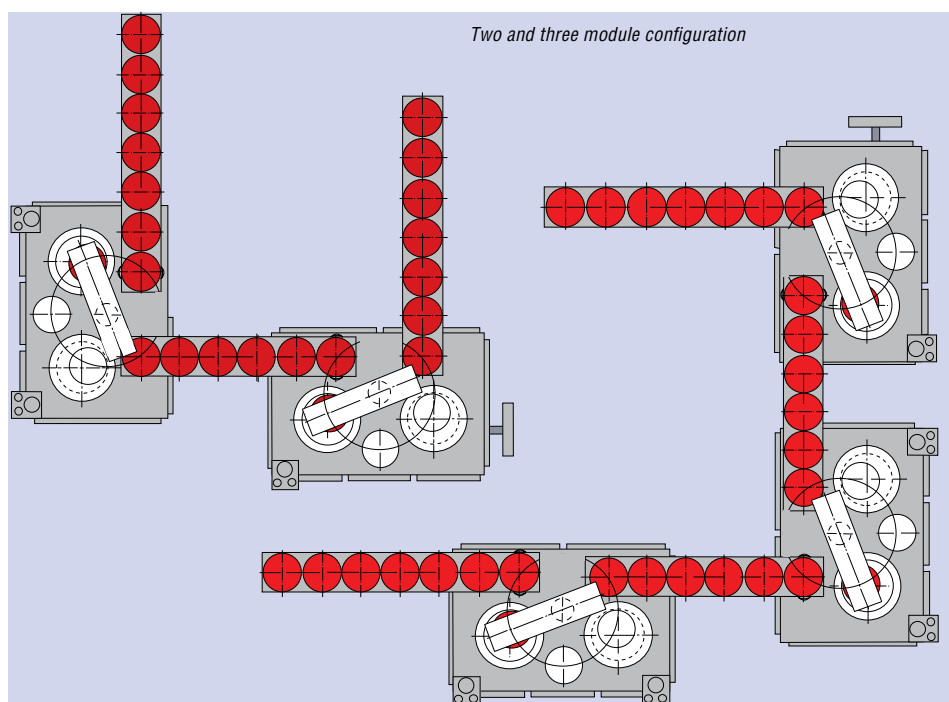
### Safety

MAPS-2 sets new standards for safety. With a totally automatic system every aspect of personal and machine safety has to be included. MAPS-2 complies with the strictest international safety standards. The conveyors are equipped with safety covers and the entire machine is closed with transparent windows and doors. The process can be monitored easily, but access to moving or rotating parts is prohibited and if it should happen that a

specimen was not clamped properly it cannot fly out of the machine.

### A typical MAPS-2 configuration

A two-module configuration for fully automated, high-volume preparation. The two modules are controlled by a PC and linked by a connection conveyor. The two work stations in Module 1 perform plane grinding, fine grinding and specimen cleaning. Module 2 carries out the two polishing steps, plus cleaning and drying. A queue function makes it possible to line up different specimen holders. It also eliminates stoppages: the transport system is non-synchronous, so the conveyors serve as accumulators of specimen holders. If 4 preparation steps are not sufficient, an extra module can easily be added to expand the number of preparation steps.



**Technical data**

<b>Connections</b>	
Power:	Three-phase
Compressed-air supply:	6 bar (90 psi) – consumption approx. 200 l/min
Water supply:	Mains water input, output to normal drain
<b>Main dimensions</b>	MAPS-2 Preparation Module
Height:	1900 mm
Width:	1470 mm
Depth:	1080 mm
Weight:	850 kg
<b>Specimen holders</b>	
Size:	160 mm dia. and 200 mm dia. Abra specimen holders with conveyor ring
<b>Specimen holder arm</b>	
Specimen holder motor:	150 rpm, 0.37 kW (0.5 HP)
Operating force:	50-700 N in steps of 10 N
<b>Plane grinding work station</b>	
Main motor:	4 kW (5.4 HP)
Rotation speed:	1450 rpm
Grinding stone:	Diameter 356 mm, grinding width 115 mm
Dressing:	Automatic dressing of grinding stone
Recirculation cooling unit:	60 l/min. Container capacity 65 l
<b>Fine grinding and polishing work station</b>	
Main motor:	550 W (0.7 HP) / 1110 W (1.5 HP)
Rotation speed:	150/300 rpm
Grinding/polishing disc:	Diameter 300-350 mm
<b>Cleaning station</b>	
	Programmable automatic cleaning:
	- Cleaning time
	- High-pressure water rinsing
	- Cleaning with detergent
	- Cleaning with alcohol
	- Air-drying
<b>Conveyor</b>	
	For 160 and 200 mm dia. specimen holders with conveyor ring.
Capacity:	6 specimen holders
<b>Dosing system</b>	
Bottle for DP-Suspension or DiaPro:	1000 ml
Bottle for DP-Lubricant:	1000 ml
Bottle for OP-Suspension:	1000 ml

**Specifications**
**Cat. no:**

<b>MAPS-2 Preparation Module</b>	061010xx
With 1 plane grinding station and 1 fine grinding/polishing station (150/300 rpm). With recirculation cooling unit (06108120/30), 1 Bottle Unit, 1 Dosing System with 3 DP-pumps (06107600), removal rate sensor (06103000) and disc cooling. With built-in PC and touch-screen operation.	
With 2 fine grinding/polishing stations (150/300 rpm), 2 Bottle Units and 1 Dosing System with 3 DP-pumps (06107600), 1 Dosing System with 2 DP-pumps and 1 OP-pump (06107610), and disc cooling.	061020xx
<b>Conveyor Feed Module</b>	061090xx
For mounting on MAPS-2 preparation module, with safety lid.	
<b>Conveyor Connection Module</b>	061091xx
For mounting on MAPS-2 preparation module, with safety lid.	
<b>Conveyor Delivery Module</b>	061092xx
For mounting on MAPS-2 preparation module, with safety lid and built-in drying fan.	
<b>Recirculation Cooling Unit</b>	06108120/30
To use recirculated water for grinding on a MAPS-2 preparation module with 2 fine grinding/polishing stations. For MAPS-2	
<b>Recirculation Connection Kit</b>	06108100/10
For connection of 2 work stations to one recirculation cooling unit. For MAPS-2	
<b>Dosing Module 3 x DP</b>	06107600
1 Dosing module with 3 DP-pumps. For MAPS-2	
<b>Dosing Module 2 x DP + 1 OP</b>	06107610
1 Dosing module with 2 DP-pumps and 1 OP-pump. For MAPS-2	
<b>Level Indication Unit</b>	06107700
For continuously monitoring the contents of suspensions and lubricants in 1 Dosing System (for 3 bottles). For MAPS-2	
<b>Alcohol Separation Kit</b>	06108200
For collection of the waste-alcohol from the cleaning station. For MAPS-2	
<b>Signal Tower</b>	06104500
To display the actual working condition of MAPS-2	

Struers' equipment is in conformity with the provisions of the applicable International Directives and their' appurtenant Standards (please contact you local supplier for details).

Struers' products are subject to constant product development. Therefore, we reserve the right to introduce changes in our products without notice.

**Struers ApS**

Pederstrupvej 84  
 DK-2750 Ballerup, Denmark  
 Phone +45 44 600 800  
 Fax +45 44 600 801  
 struers@struers.dk  
 www.struers.com

**AUSTRALIAN & NEW ZEALAND**

**Struers Australia**  
 27 Mayneview Street  
 Milton QLD 4064  
 Australia  
 Phone +61 7 3512 9600  
 Fax +61 7 3369 8200  
 info.au@struers.dk

**BELGIUM (Wallonie)**  
**Struers S.A.S.**

370, rue du Marché Rollay  
 F- 94507 Champigny  
 sur Marne Cedex  
 Téléphone +33 1 5509 1430  
 Télécopie +33 1 5509 1449  
 struers@struers.fr

**BELGIUM (Flanders)**  
**Struers GmbH Nederland**

Zomerdijk 34 A  
 3143 CT Maassluis  
 Telefoon +31 (10) 599 7209  
 Fax +31 (10) 5997201  
 netherlands@struers.de

**CANADA**

**Struers Ltd.**  
 7275 West Credit Avenue  
 Mississauga, Ontario L5N 5M9  
 Phone +1 905-814-8855  
 Fax +1 905-814-1440  
 info@struers.com

**CHINA**

**Struers Ltd.**  
 No. 1696 Zhang Heng Road  
 Zhang Jiang Hi-Tech Park  
 Shanghai 201203, P.R. China  
 Phone +86 (21) 6035 3900  
 Fax +86 (21) 6035 3999  
 struers@struers.cn

**CZECH REPUBLIC & SLOVAKIA**

**Struers GmbH Organiza ni složka**  
 v dekotecnicky park  
 P. Ilepská 1920,  
 CZ-252 63 Roztoky u Prahy  
 Phone +420 233 312 625  
 Fax +420 233 312 640  
 czechrepublic@struers.de  
 slovakia@struers.de

**GERMANY**

**Struers GmbH**  
 Carl-Friedrich-Benz-Straße 5  
 D- 47877 Willich  
 Telefon +49 (0) 2154 486-0  
 Fax +49 (0) 2154 486-222  
 verkauf@struers.de

**FRANCE**

**Struers S.A.S.**  
 370, rue du Marché Rollay  
 F-94507 Champigny  
 sur Marne Cedex  
 Téléphone +33 1 5509 1430  
 Télécopie +33 1 5509 1449  
 struers@struers.fr

**HUNGARY**

**Struers GmbH**  
 Magyarországi Fióktelep  
 Tatai út 53  
 2821 Gyermely  
 Phone +36 (34) 880546  
 Fax +36 (34) 880547  
 hungary@struers.de

**IRELAND**

**Struers Ltd.**  
 Unit 11 Evolution@ AMP  
 Whittle Way, Catcliffe  
 Rotherham S60 5BL  
 Tel. +44 0845 604 6664  
 Fax +44 0845 604 6651  
 info@struers.co.uk

**ITALY**

**Struers Italia**  
 Via Monte Grappa 80/4  
 20020 Arese (MI)  
 Tel. +39-02/38236281  
 Fax +39-02/38236274  
 struers.it@struers.it

**JAPAN**

**Marumoto Struers K.K.**  
 Takanawa Muse Bldg. 1F  
 3-14-13 Higashi-Gotanda,  
 Shinagawa  
 Tokyo  
 141-0022 Japan  
 Phone +81 3 5488 6207  
 Fax +81 3 5488 6237  
 struers@struers.co.jp

**NETHERLANDS**

**Struers GmbH Nederland**  
 Zomerdijk 34 A  
 3143 CT Maassluis  
 Telefoon +31 (10) 599 7209  
 Fax +31 (10) 5997201  
 netherlands@struers.de

**NORWAY**

**Struers ApS, Norge**  
 Sjøskogenveien 44C  
 1407 Vinterbro  
 Telefon +47 970 94 285  
 info@struers.no

**AUSTRIA**

**Struers GmbH**  
 Zweigniederlassung Österreich  
 Betriebsgebiet Puch Nord 8  
 5412 Puch  
 Telefon +43 6245 70567  
 Fax +43 6245 70567-78  
 austria@struers.de

**POLAND**

**Struers Sp. z o.o.**  
 Oddział w Polsce  
 ul. Jasnogórska 44  
 31-358 Kraków  
 Phone +48 12 661 20 60  
 Fax +48 12 626 01 46  
 poland@struers.de

**ROMANIA**

**Struers GmbH, Sucursala Bucuresti**  
 Str. Preciziei nr. 6R  
 062203 sector 6, Bucuresti  
 Phone +40 (31) 101 9548  
 Fax +40 (31) 101 9549  
 romania@struers.de

**SWITZERLAND**

**Struers GmbH**  
 Zweigniederlassung Schweiz  
 Weissenbrunnstraße 41  
 CH-8903 Birmensdorf  
 Telefon +41 44 777 63 07  
 Fax +41 44 777 63 09  
 switzerland@struers.de

**SINGAPORE**

**Struers Singapore**  
 627A Aljunied Road,  
 #07-08 BizTech Centre,  
 Singapore 389842  
 Phone +65 6299 2268  
 Fax +65 6299 2661  
 struers.sg@struers.dk

**SPAIN**

**Struers España**  
 Camino Cerro de los Gamos 1  
 Building 1 - Pozuelo de Alarcón  
 CP 28224 Madrid  
 Teléfono +34 917 901 204  
 Fax +34 917 901 112  
 struers.es@struers.es

**FINLAND**

**Struers ApS, Suomi**  
 Hietalahdenranta 13  
 00180 Helsinki  
 Puhelin +358 (0)207 919 430  
 Faksi +358 (0)207 919 431  
 finland@struers.fi

**SWEDEN**

**Struers Sverige**  
 Box 20038  
 161 02 Bromma  
 Telefon +46 (0)8 447 53 90  
 Telefax +46 (0)8 447 53 99  
 info@struers.se

**UNITED KINGDOM**

**Struers Ltd.**  
 Unit 11 Evolution @ AMP  
 Whittle Way, Catcliffe  
 Rotherham S60 5BL  
 Tel. +44 0845 604 6664  
 Fax +44 0845 604 6651  
 info@struers.co.uk

**USA**

**Struers Inc.**  
 24766 Detroit Road  
 Westlake, OH 44145-1598  
 Phone +1 440 871 0071  
 Fax +1 440 871 8188  
 info@struers.com