

# Duramin-40

## Instruction Manual



Manual No.: 16607001  
Revision A

Date of Release 2017.10.12

A decorative graphic consisting of several parallel blue lines that are slanted upwards from left to right, creating a sense of depth and movement. These lines are positioned behind the important notice box.

### IMPORTANT

READ the instruction manual carefully before use.  
Keep a copy of the manual in an easy-to-access place  
for future reference.

*Duramin-40*  
*Instruction Manual*

*Duramin-40*  
*Instruction Manual*

**Intended use:**

The machine is intended to be used to test the hardness of metals according to the following methods:

Vickers	EN ISO 6507, ASTM E-384
Knoop	EN ISO 4545, ASTM E-384
Brinell	EN ISO 6506, ASTM E-10

The hardness tester meets the applicable DIN, ISO-EN, ASTM and JIS standards.

The machine is for use in a professional working environment (e.g. production floor or materialography laboratory).

The machine should only be used for its intended purpose and as detailed in the Instruction Manual.

The machine may only be operated by persons who have been properly trained in the operation, maintenance and repair of the machine and are aware of the risks involved. The manufacturer accepts no liability in cases where the machine is used for purposes other than those for which it is intended. In these cases, liability is transferred to the user.

**Models:**

Duramin-40 M1/M2/M3  
Duramin-40 A1/A2/A3  
Duramin-40 AC1/AC2/AC3

# Duramin-40

## Instruction Manual

---

Always state *Serial No* and *Voltage/frequency* if you have technical questions or when ordering spare parts. You will find the Serial No. and Voltage on the type plate of the machine itself. We may also need the *Date* and *Article No* of the manual. This information is found on the front cover.

The following restrictions should be observed, as violation of the restrictions may cause cancellation of Struers legal obligations:

**Instruction Manuals:** Struers Instruction Manual may only be used in connection with Struers equipment covered by the Instruction Manual.

**Service Manuals:** Struers Service Manual may only be used by a trained technician authorised by Struers. The Service Manual may only be used in connection with Struers equipment covered by the Service Manual.

Struers assumes no responsibility for errors in the manual text/illustrations. The information in this manual is subject to change without notice. The manual may mention accessories or parts not included in the present version of the equipment.

**Original instructions.** The contents of this manual are the property of Struers. Reproduction of any part of this manual without the written permission of Struers is not allowed.

All rights reserved. © Struers 2017.

**Struers**  
Pederstrupvej 84  
DK-2750 Ballerup  
Denmark  
Telephone +45 44 600 800  
Fax +45 44 600 801

---



## Duramin-40 Safety Precaution Sheet

### To be read carefully before use

1. The operator(s) must read the Safety and User's Guide sections of this manual and the relevant sections of the manuals for any connected equipment and accessories.

<b>WARNING!</b>
-----------------

Ignoring this information and mishandling of the equipment can lead to severe bodily injuries and material damage.
--

2. The machine must be installed in compliance with local safety regulations.
3. The machine must be placed on a safe and stable support. Failure to do so can affect the proper working and cause the equipment to fall down and/or cause accidents and injuries. All safety functions and guards of the machine must be in working order.
4. Do not modify this equipment. Doing so can cause fire and/or electric shock.
5. Do not twist or damage the power cords. Damaged power cords can cause fire and/or electric shock.
6. Do not disassemble this equipment. Doing so can cause electric shock.
7. Do not operate the equipment at a voltage other than the power voltage that is indicated. Doing so can cause fires.
8. Do not allow the machine to become wet. Fires can occur if water gets inside the equipment.  
If water or other liquid does get inside the equipment, turn off the power to the equipment's main unit, disconnect the power supply, and call technical service.
9. If malfunctions, smoke or unusual noises are observed - turn off the power, disconnect the power supply and call technical service.
10. Do not connect/ disconnect power with wet hands. Doing so can result in electric shock.

*Duramin-40*  
*Instruction Manual*

- 11.** Disconnect the power supply prior to any cleaning, maintenance or service.  
Failure to do so can result in electric shock.
- 12.** Do not block the ventilation. Blocking the ventilation can cause heat to accumulate inside the instrument, which in turn, can generate fire.
- 13.** Do not open any panel on the machine.  
High voltages exist inside the instrument and may cause electrical shocks to personnel.

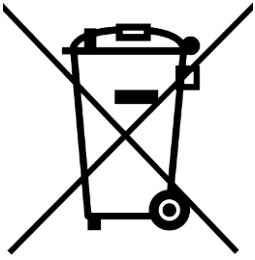
---

The equipment should only be used for its intended purpose and as detailed in the Instruction Manual.


The equipment is designed for use with accessories supplied by Struers. If subjected to misuse, improper installation, alteration, neglect, accident or improper repair, Struers will accept no responsibility for damage(s) to the user or the equipment.

Dismantling of any part of the equipment, during service or repair, should always be performed by a qualified technician (electromechanical, electronic, mechanical, pneumatic, etc.)

---



## **Disposal**

Equipment marked with a WEEE symbol  contain electrical and electronic components and must not be disposed of as general waste.

Please contact your local authorities for information on the correct method of disposal in accordance with national legislation.

*Duramin-40*  
*Instruction Manual*



# User's Guide

Table of Contents	Page
<b>1. Getting Started</b>	
Unpacking Duramin-40.....	2
Location .....	3
Lifting Duramin-40.....	4
Placing Duramin-40.....	5
Levelling.....	5
Removing the Lifting Bar .....	5
Removing the Transport Plate.....	6
Checking the Contents .....	7
Getting Acquainted with Duramin-40.....	8
USB Drive and WiFi Adapter.....	10
Rear plate .....	10
Noise Level .....	10
Power Supply.....	11
Connecting the Tester .....	11
Assembling the Monitor.....	13
Connecting the Monitor .....	14
<b>2. Basic Operations</b>	
Front Panel Controls .....	15
Software.....	16
Start-up.....	16
Overview Screen.....	18
Main Menu .....	19
Test Result Window .....	19
Test Settings.....	19
Additional Results Window.....	19
Dashboard Controls .....	20
<b>3. Maintenance</b>	
General Cleaning .....	21
Daily Maintenance.....	21
Weekly Maintenance.....	21
Cleaning Surfaces.....	21
Weekly Inspection.....	21
Yearly Maintenance .....	22
Replacing the Fuse .....	22
Calibration.....	22

## 1. Getting Started

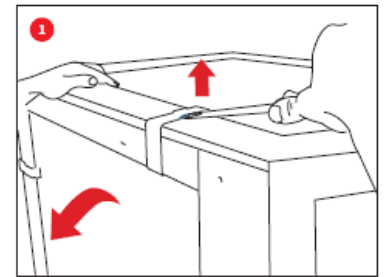
### Unpacking Duramin-40

**Important!**

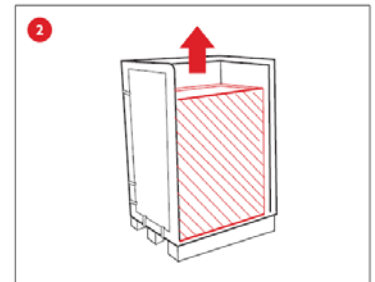
Refer to the **HOW TO UNPACK** instructions delivered with Duramin.

**Take care** whilst handling Duramin.  
Do not expose to external impact.  
Do not tilt over 30 degrees.  
Do not touch the turret.

- Carefully open and remove the top of the packing crate.



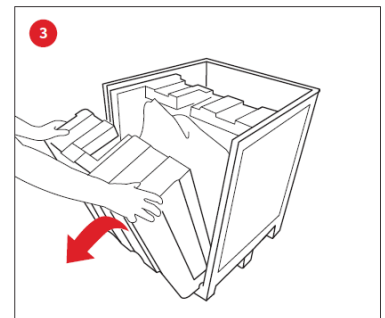
- Remove one side of the packing crate.
- Remove the monitor, box of accessories and other loose items.



- Carefully lift the foam pieces to access Duramin.



**NB: Store the packing box and foam packaging for use whenever Duramin is transported/re-located.**

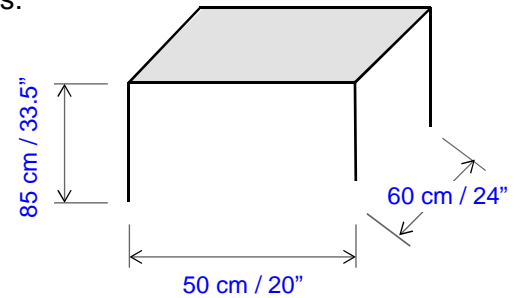


- Remove the plastic covering.

## Location

- Duramin must be placed close to the power supply.
- Duramin is designed to be placed on a rigid, stable workbench with a horizontal surface.  
The workbench must be able to carry at least 130 Kg / 280 lbs.

Minimum workbench dimensions:



To take advantage of the maximum spindle capacity, a hole must be drilled in the table top to accommodate the full stroke of the spindle. Please refer to the *Drilling Plan* for dimensions.

## Vibration-free Location

- Install Duramin in a vibration-free location.

***Important!***

Vibrations can lead to inaccurate measurements and must be avoided.



A simple way of detecting vibrations is to set up a tray of water and watch for ripples on the surface.

Sources of vibration can include:

- Passers-by (persons walking past), a road with heavy traffic, cranes, equipment generating vibrations, equipment generating sound (acoustic vibration), exposure to wind or air conditioning fans.

If possible, install the hardness tester on the ground floor of a building and away from exits or doorways.

## Lifting Duramin-40

A crane and lifting straps are required to lift the machine from the packing box. The crane should have a minimum lifting capacity of 100 kg.



***Important!***

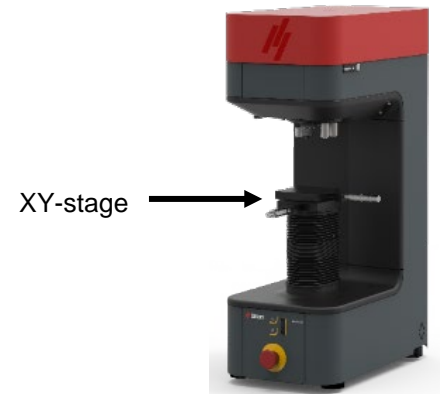
**Take care** whilst handling Duramin.  
Do not expose to external impact.  
Do not tilt over 30 degrees.  
Do not touch the turret.

- Check that the crane has a free pathway from the lifting point to the final location.
- Place the lifting straps securely around the lifting bar.
- Carefully lift Duramin out of the packing box.
  
- Check whether the 4 adjustable vibration dampers are installed. If not,
  - Mount the dampers and adjust the height of the damper so that they are of equal height.
  - Place Duramin-40 into its final location

## Placing Duramin-40 Levelling

To eliminate possible wear and tear of the tester's mechanical structure, the tester should be levelled once it is in its final location.

- Check that the XY-stage is level.



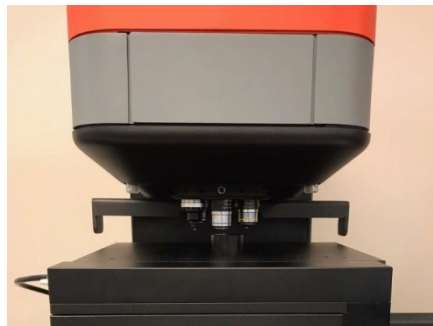
If not,

- Turn the vibration damper in the rear right hand corner, to level the XY-stage.



## Removing the Lifting Bar

- Support the lifting bar and remove the screws and washers from both sides of the bar.



**Important:**  
Keep the lifting bar, screws and washers for use whenever the machine is to be relocated.

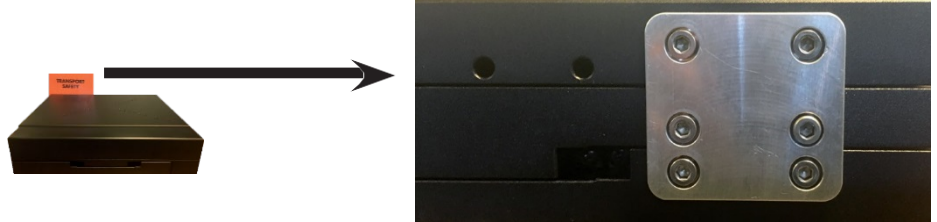
*Removing the Transport Plate*  
(Motorized XY-stage option only)

- Remove the transport safety **before** turning on the tester. The motorized XY-stage will automatically move to perform a reference search on initialization.



***Important!***  
Damage to the stage will result if the tester is switched on with the transport safety plate mounted.

- Unscrew the six screws securing the transport safety plate at the rear.
- Keep the plate and screws for use whenever the machine is to be relocated.



## Checking the Contents

In the packing box you should find the following parts:

- 1 Duramin-40 (Hardness Tester)
- 1 Accessories Case
- 1 15" Monitor (2<sup>nd</sup> monitor optional)
- 1 Keyboard (Option)
- 1 Mouse (Option)

### Accessories Case Standard Accessories



- Indenter(s) and objective lens(es)
- 1 Wireless Mouse and keyboard (Option)
- 2 Power cables
- 1 USB cable to monitor
- 1 HDMI to DVI cable
- 1 Spare fuse
- 1 Certificate of calibration on USB
- 1 USB Wi-Fi Adapter
- 1 Cables for motorized XY-stage (Option)
- 1 ASUS Bluetooth dongle (Option)

### Optional Accessories

- Please consult your order confirmation to check that all the accessories ordered are included in the delivery.

**Note**

Some components or parts may be packaged separately and may not be included in the accessory box or may have been installed on the hardness tester.

**Note**

The actual packaging and accessories may appear different to those shown in the picture.

**Getting Acquainted  
with Duramin-40**

Take a moment to familiarise yourself with the location and names of the Duramin-40 components.

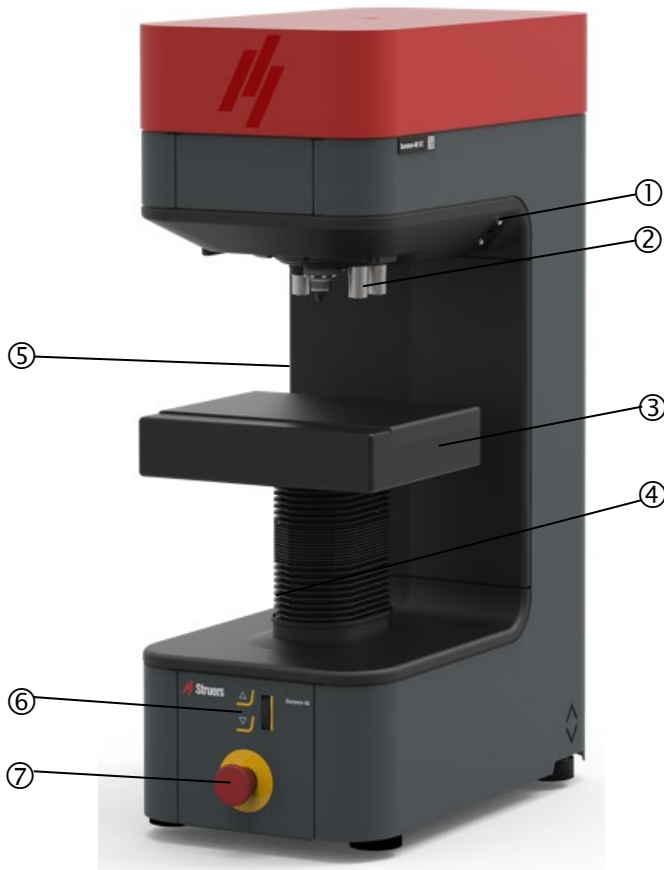


Tester

Wireless keyboard & mouse (Option)

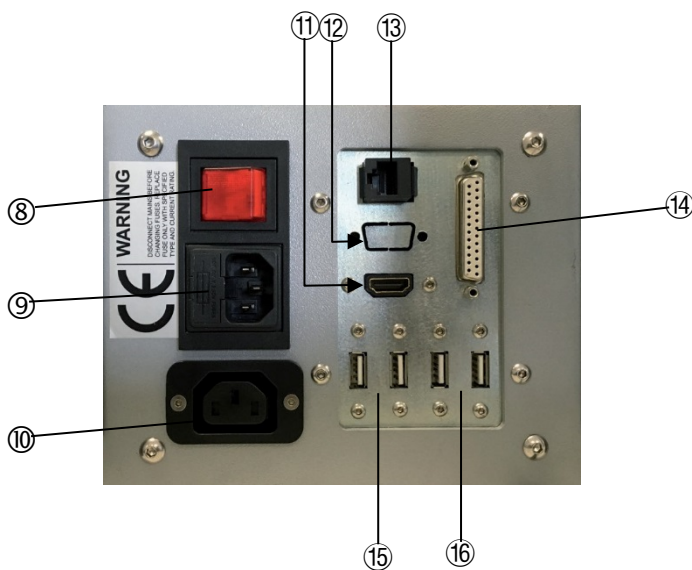


Hardness Tester Body



- ① USB port
- ② 6 position turret
- ③ XY-stage
- ④ Spindle cover
- ⑤ Connection for motorized XY-stage
- ⑥ Z-axis & focus control
- ⑦ Emergency stop

Power Connections



- ⑧ Main power switch
- ⑨ Main power connection / Fuse
- ⑩ Power connector to monitor
- ⑪ HDMI connector to monitor
- ⑫ Not used
- ⑬ Network (RJ-45 LAN connection)
- ⑭ Not used
- ⑮ USB to monitor
- ⑯ USB receiver for keyboard and mouse

*Duramin-40*  
*Instruction Manual*

*USB Drive and WiFi Adapter*



The USB drive contains direct and indirect calibration documents.



The USB WiFi Adapter allows for cable free communication with the Duramin.

*Rear plate*

Information on the model number, serial number, weight, date of manufacture, and power requirements can be found on the type plate on the back of the machine.

**Noise Level**

Less than 70 dB (A) measured at idle running, at a distance of 1.0 m/39.4" from the machine.

**Power Supply**  
*Connecting the Tester*

Always remember to switch the power off when installing electrical equipment!



**DANGER!**

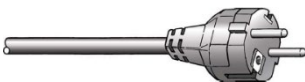
The machine must be earthed (grounded).



**Important!**

Check that the mains voltage corresponds to the voltage stated on the type plate on the side of the machine before connecting the machine. Incorrect voltage may result in damage to the electrical circuit.

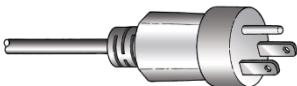
Duramin-40 is shipped with 2 types of Mains cables:



The 2-pin (European Schuko) plug is for use on single-phase connections.

If the plug supplied on this cable is not approved in your country, then the plug must be replaced with an approved plug. The leads must be connected as follows:

Yellow/green: earth  
Brown: line (live)  
Blue: neutral



The 3-pin (North American NEMA 5-15P) plug is for use on single-phase connections.

If the plug supplied on this cable is not approved in your country, then the plug must be replaced with an approved plug. The leads must be connected as follows:

Green: earth  
Black: line (live)  
White: line (live)

*Duramin-40*  
*Instruction Manual*

Connection to the Machine



Both cables are equipped on the other end with an IEC 320 cable connector (US 3-pin shroud male to 3-prong grounded plug female) that has to be connected to Duramin.

**WARNING!**

The output voltage from this cable is 200 – 240V and not 110V.  
DO NOT use this cable to connect equipment that use a 110V power supply. Failure to adhere to this may result in material damage.

## **Assembling the Monitor**

Contents of the monitor box:

- 1 monitor with base
- 1 power cord adapter
- 1 USB cable, and European power cords.

Note: The dual monitor option will be delivered with 2 monitor boxes.

- Remove the monitor's rear panel.
- Slide the panel off to expose the connection ports.



- Remove the two black plastic pieces around the monitor stand joint.
- Adjust the stand angle.  
If necessary loosen the two nuts around the joint using a 13 mm hexagonal wrench.



- Lay the monitor face down on a flat surface.
- Unscrew the four screws on the rear of the monitor.

- Position the stand on the back of the monitor and line up the four holes with the four screw holes.  
Check that the label **TOP** will be at the top of the monitor when it is upright.
- Tighten the four screws to attach the monitor to the stand.

### Connecting the Monitor

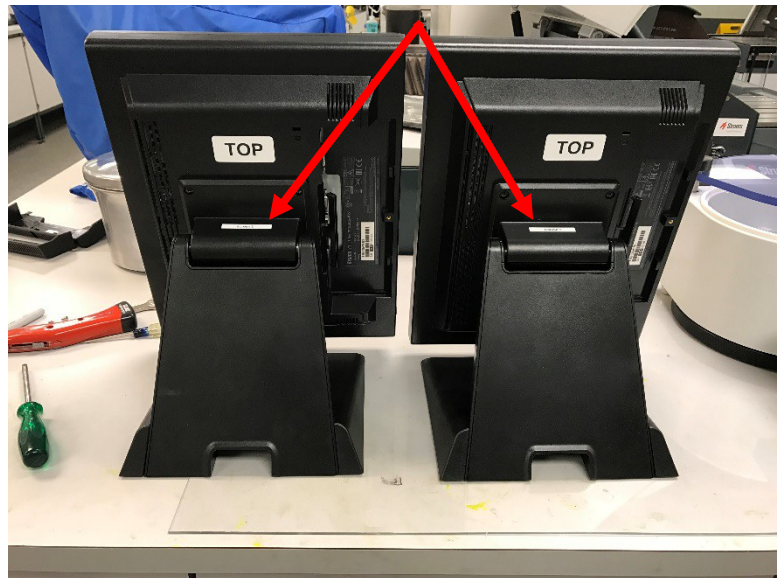
- Plug the USB cable into the USB port, HDMI cable to the DVI port, and the power cord adapter to the power port on the rear of the tester.
- Check that all plugs are connected correctly and replace the rear panel of the monitor.

**Important!**

Only monitors supplied by Struers may be connected to Duramin.  
Failure to adhere to this may result in material damage.

### Dual Monitor Option

The monitors will be labeled *Screen L* and *Screen R*.  
The ports at the rear of the Duramin will also be labelled *Screen L* and *Screen R*.



- Connect the correct USB and HDMI cables to the corresponding *Screen L* and *Screen R* ports.
- The power cable for the 2<sup>nd</sup> monitor must be plugged into a mains power socket.  
The mains power socket must be easily accessible and located between 0.6 m - 1.9 m (2½" – 6') above floor level. (An upper limit of 1.7 m (5' 6") is recommended).

## 2. Basic Operations

### Front Panel Controls



#### MAIN SWITCH

The main switch is located on the rear of the machine.

The main switch will be illuminated when the power is turned on.



The EMERGENCY STOP is located on the front of the machine.

Emergency Stop

- Push the red button to Activate.

- Turn the red button clockwise to Release.



**NB!**

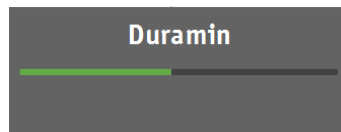
BEFORE releasing (disengaging) the Emergency stop, investigate the reason for activating the Emergency stop and take any necessary corrective action.

## Software

Duramin-40 is operated through the Duramin software. A short description of the software is included in this manual. Please refer to the Duramin software manual for a detailed description of the software functions.

## Start-up

- Switch Duramin-40 on using the main switch at the rear. The Duramin software will initialize and the following progress bar will appear on the monitor:



### Tip:

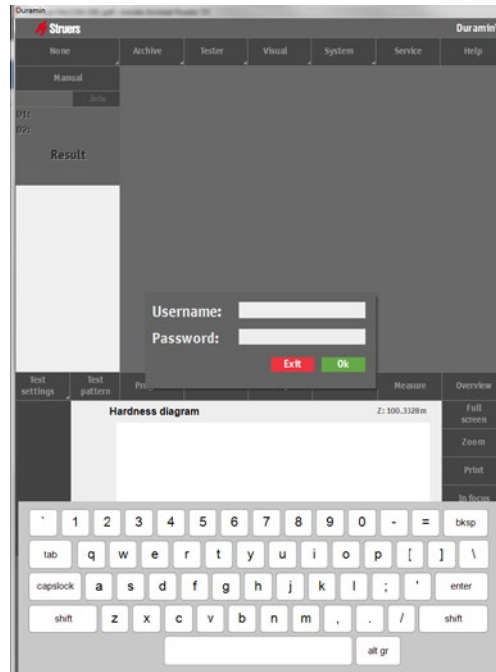
Make sure that the emergency stop is not activated during start-up. If the emergency stop is activated during start-up, a failure message will appear.

- Release the emergency stop.
- Press **System**, then **Exit**.
- Switch Duramin Off using the Main switch, then switch on again to start initialization.



## Duramin-40 Instruction Manual

The following screen will appear on the monitor.



Note: The actual screen may appear different depending on the configuration and model of the Duramin-40.

- Push gently in the middle of the designated buttons for tester operation. Do not use force. Do not use sharp objects.

Alternatively, use the external keyboard and mouse to operate Duramin-40.

- Enter the *Username* and *Password*.  
When Duramin is used for the first time, the default will be:  
**Username:** Admin  
**Password:** none
- Press **Ok**.



**Tip:** the default username is not case sensitive.

For instructions on how to add new users, please refer to the Software manual.

**Overview Screen**

The overview screen is primarily divided into 5 main areas.

- Main menu
- Test result
- Objective view
- Test settings with Additional results
- Dashboard Controls

The screenshot shows the Duramin software interface with the following components:

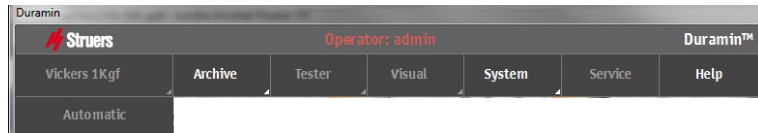
- Main Menu:** Located at the top, it includes buttons for 'Vickers 1Kgf', 'Archive', 'Tester', 'Visual', 'System', 'Service', and 'Help'.
- Test result:** A table on the left side of the screen listing test results. The current result is highlighted in green: 721.87 HV1.
- Objective view:** A central image showing a diamond-shaped indentation on a metal surface.
- Test settings:** A section at the bottom left containing a 'Chd diagram' graph and various control buttons like 'Test settings', 'Test pattern', 'Program', 'Delete', 'Escape', 'Save', 'Measure', and 'Overview'.
- Dashboard Controls:** A circular control panel at the bottom center with buttons for 'AH', '3', 'X0.1', '2', 'X0.5', '5', '20x', '6', and 'HK', along with directional arrows and a 'C' button.

Nr	Value	Sc...
1/1	721.87	HV1
1/2	721.87	HV1
1/3	730.84	HV1
1/4	704.41	HV1
1/5	715.98	HV1
1/6	726.34	HV1
1/7	615.27	HV1
1/8	565.97	HV1
1/9	561.88	HV1
1/10	435.81	HV1
1/11	405.22	HV1
1/12	262.56	HV1
1/13	227.50	HV1
1/14	218.34	HV1
1/15	205.61	HV1

# Duramin-40 Instruction Manual

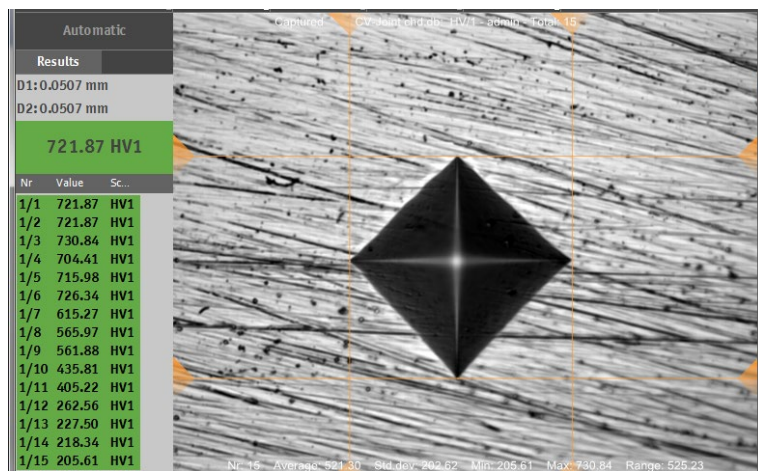
## Main Menu

The *Main Menu* is used to select the test method and scale required as well as adjusting settings and other functions.



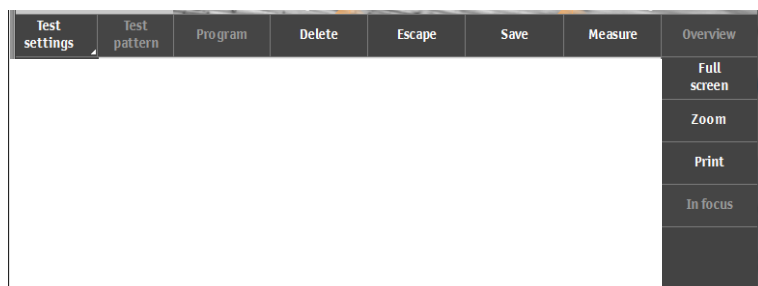
## Test Result Window

The *Test Result Window* shows an image of the indent (or the indent pattern) and a list of the indents performed.



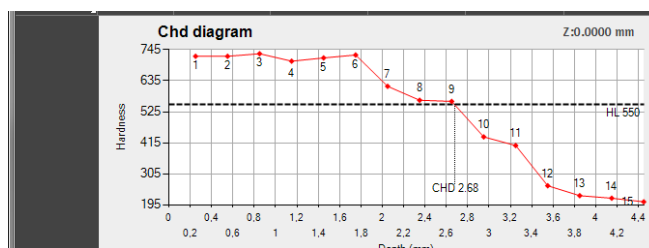
## Test Settings

The *Test Settings* menus are used to select test patterns and to perform additional functions.



## Additional Results Window

The *Additional Results Window* shows an illustration of the results obtained.



*Duramin-40  
Instruction Manual*

*Dashboard Controls*

The *Dashboard Controls* are used to move the turret and select the objective to be used, fine positioning of the spindle light controls and to start the indentation process.



Please refer to the [Duramin Software manual](#) for a detailed description of the software and its functions.

### 3. Maintenance

#### General Cleaning

- Keep Duramin-40 as clean as possible. To ensure a longer lifetime for your equipment Struers strongly recommends regular cleaning.

#### Daily Maintenance Machine



- Clean all accessible surfaces with a soft, damp cloth.

**Tip:**  
Do not use a dry cloth as the surfaces are not scratch resistant.  
Do not use aggressive or abrasive materials.  
Grease and oil can be removed with ethanol or isopropanol.

**IMPORTANT**  
Never use acetone, benzol or similar solvents.

#### Weekly Maintenance Cleaning Surfaces

- Clean painted surfaces and the control panel with a soft damp cloth and common household detergents.

**NB!**  
Do not clean use chemical solutions such as “thinner” or white spirit as this can cause permanent damage to the painting, metallic surfaces or plastics.  
Do not use aggressive or abrasive materials.

#### Weekly Inspection

- Inspect the following parts before every hardness test or at least weekly.

Part	Attention	Action	Precaution
<b>Indenter</b>	Tip dirty	Wipe indenter	Do not bend the indenter shaft
<b>Objective or lens</b>	Lens surface polluted	Wipe lens	Do not scratch the objective or lens
<b>Anvil</b>	Rust	Remove rust	Do not bring the stage into contact with the turret.
<b>Test block</b>	Rusted	Replace test block	Do not use rusted test blocks

## Yearly Maintenance

- Clean the elevator spindle and oil lightly with e.g. a universal household oil (do NOT lubricate the spindle with motor oil).
  - Carefully lift the spindle cover.
  - Wipe the spindle THOROUGHLY after lubrication so that as little as possible oil is left on the spindle.
  - Wipe the spindle again after a few days to ensure no oil residue is left on the spindle surface.

## Replacing the Fuse

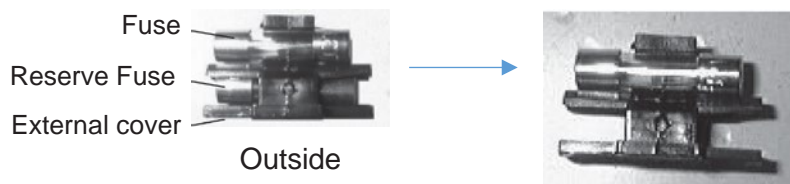
The fuse holder is located directly under the power connection on the rear of Duramin-40.

- Turn Duramin-40 off.
- Disconnect the electric power cable.



Fuse holder

- Pull out the fuse holder using a flat-head screwdriver.
- Take out the blown fuse and replace with the reserve fuse.



- Re-install the fuse holder.
- Re-connect the electric power cable.

**Tip.**

Remember to order a new reserve.

## Calibration

Duramin-40's highly sensitive and accurate load cell and objectives are calibrated prior to shipping.

Please contact Struers Service should the load cell or objectives require recalibration.

# Reference Guide

Table of Contents	Page
<b>1. Struers Knowledge</b> .....	24
<b>2. Trouble-Shooting</b> .....	25
<b>3. Transport</b> .....	26
<b>4. Technical Data</b> .....	27

## 1. Struers Knowledge

The need for fast, robust and well proven test methods for materials verification is inevitable. Vickers, Knoop, Rockwell and Brinell methods, with a countless number of loads and indenter geometries, gives an almost countless number of procedures, suitable for simple characterization of a large fraction of existing materials.

Visit the Struers Hardness testing website for a comprehensive introduction to the principles of hardness testing, useful troubleshooting tips and the latest application knowledge in the field.

Click on the link: [Struers - Ensuring Certainty / Knowledge / Hardness testing](#)

OR

Scan the QR code on the Duramin tag on your machine





## 2. Trouble-Shooting

Some of the minor malfunctions can be resolved by restarting the tester:

- Press **System**, then **Exit**.
- Switch Duramin Off, then switch on again to start initialization.

<b>Error</b>	<b>Explanation</b>	<b>Action</b>
Start-up failure	The emergency stop is activated	- Release the emergency stop. - Restart the tester.
Max down reached!	The maximum down position of the force actuator has been reached.	
Motor failure!	Failure of force application motor.	- Restart the tester. If the error remains, contact Struers Service.
System not initialized!	Failure of Software communication.	- Restart the tester. If the error remains, contact Struers Service.
Failed to open connection to AUX on EURP AUX Virtual Com Port (COM3)	Failure of Software communication.	- Restart the tester. - Press <b>System</b> , then <b>Exit</b> . - Switch Duramin Off, then switch on again to start initialization. If the error remains, contact Struers Service.
Load motor is not in home position		- Press <b>Escape</b> . - Then press <b>Start</b> .  If this does not help, - Restart the tester. If the error remains, contact Struers Service.

### **3. Transport**

DO NOT ship or transport the tester without the correct packing materials.

This could cause severe damage to the testers load application system.

- Keep the packing box and foam packaging for use whenever Duramin is transported/re-located.

DO NOT ship or transport the tester without mounting the lifting bar.  
DO NOT ship or transport the tester without mounting the Transport Plate (motorized XY-stage option)

This could cause severe damage to the testers load application system.

- Keep the lifting bar, screws and washers for use whenever the machine is to be relocated.

## 4. Technical Data

Subject		Specifications
<i>Electrical Data</i>	Power supply	100 V AC – 240 V AC, 50/60Hz, single phase
	Power consumption (load)	82 W
<i>Residual Current Circuit Breaker</i>	Type A, 30 mA is required.	
<i>Weight</i>	Duramin-40 M1/M2/M3	101 Kg/ 223 lbs
	Duramin-40 A1/A2/A3	112 Kg/ 247 lbs
	Duramin-40 AC1/AC2/AC3	112 Kg/ 247 lbs
<i>Operating Environment</i>	Noise level	Less than 70 dB (A) measured at idle running, at a distance of 1.0 m/39.4" from the machine.
	Surrounding temperature	10-35 °C / 40-105 °F Recommended: 21 ±3 °C / °F
	Humidity	10%-90% RH (Non-condensing) <b>Important</b> No condensation may form on the test unit
<i>Safety standards</i>	Please refer to the Declaration of Conformity	

Please refer to the [Duramin-40 brochure](#) for further details.



Pederstrupvej 84  
DK-2750 Ballerup  
Denmark