

HARDNESS MATTERS



Struers Duramin Hardness Testers

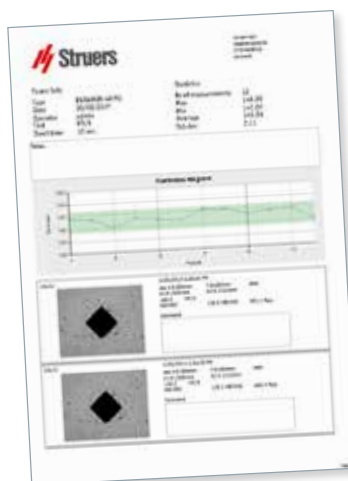


Did you know...

The new Duramin range represents the latest generation of highly successful hardness testers. With 30 years of experience within hardness testing Struers is committed to constant improvement by listening to our customers and understanding their evolving needs.



All micro/macro and universal machines come with an automatic 6, 7 or 8-position turret as standard.



Customizable Test Reports

Test reports can be easily generated and measurement data exported. Report templates are customizable via an easy report editor.

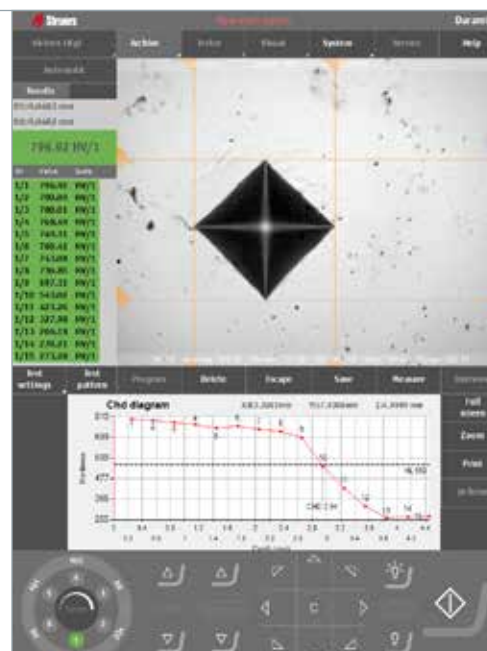


Easy access

All machines are designed with serviceability in mind.

Application modules

A number of application specific modules are available for the various equipment, e.g. for weld testing, fracture toughness measurement (K_{IC}), hardness testing of ammunition casings or color mapping.



Micro/macro Hardness Testers

Duramin-4

Entry level Vickers hardness tester – optimal repeatability and easy operation.

- Manual indent evaluation via eyepiece
- Manual XY-stage and Z-axis
- Automatic 6-position turret
- Available in two load ranges: 10 gf - 2 kgf and 1 kgf - 62.5 kgf

This entry-level range of micro hardness testers primarily targets Vickers testing, but can also be used for Knoop and Brinell testing. The Duramin-4 testers are equipped with a combination of manual and automatic features to ensure easy operation.



- 1 Manual indent evaluation (eye piece)
- 2 6-position automatic turret
- 3 Manual XY-stage
- 4 Manual Z-axis
- 5 Hand wheel for Z-axis
- 6 Mouse or touch screen operated

Micro/macro Hardness Testers

Duramin-40

Versatile hardness testing that ensures repeatability over a wide load range.

- Manual and motorized XY-stage
- Motorized Z-axis
- Overview camera option
- Duramin-40 comes with three load ranges; 10 gf - 10 kgf, 10 gf - 31.25 kgf, and 1 gf - 62.5 kgf

Duramin-40 is the primary range of Struers micro/macro hardness testers. It is available with a manual and motorized XY-stage and with an overview camera. The tester includes an integrated PC with a separate monitor for touch screen or mouse operation. Dual monitors are also an option. The test cycle is fully automatic and a motorized 6-position turret is standard. Add-on modules include Kc fracture measurements, mapping and weld measurements.



- 1 Optional overview camera
- 2 6- or 7-position automatic turret
- 3 Manual or motorized XY-stage
- 4 Motorized Z-axis
- 5 Scroll wheel for fine focus
- 6 Mouse or touch screen operated



Duramin-100

A powerful solution, combining micro and universal testing in one efficient machine.

- Motorized XY-stage
- Automatic 8-position turret
- Motorized test head
- Comes in three load ranges: 10 gf - 62.5 kgf, 10 gf - 150 kgf, 10 gf - 250 kgf

Duramin-100 range combines both a micro and universal tester. The top model covers a wide load range from 10 gf to 250 kgf, and includes a motorized XY-stage, motorized test head, overview camera, laser guide and 8-position turret. Duramin-100 is available in 3 load ranges and is suitable for Vickers, Brinell and Rockwell hardness testing. Add-on modules include Kc fracture measurements, mapping and weld measurements.



- 1 Vertical concept with motorized test head
- 2 8-position automatic turret with overview camera
- 3 Motorized XY-stage
- 4 Scroll wheel for fine focus
- 5 Mouse or touch screen operated



Universal Hardness Testers

Duramin-600

Robust and automatic universal hardness testing.

- Automatic 6-position turret
- Ring-light with dark field illumination for the testing of soft metals
- Optional motorized Z-axis for large samples
- Available in three load ranges: 1 - 250 kgf, 3 - 750 kgf, 5 - 3000 kgf

Duramin-600 is designed to survive the toughest production environment. It is a universal hardness tester, operated by a robust touch screen, and comes available in three load ranges and with optional motorized Z-table for larger samples.



- 1 Mouse or touch screen operated
- 2 6-position automatic turret
- 3 Optional motorized Z-axis for large samples

Duramin-650

Versatile universal hardness testing that ensures repeatability over a wide load range.

- Motorized test head
- Motorized XY-stage (optional)
- Embedded PC, operated by mouse or touch screen
- Available in three load ranges: 1 - 250 kgf, 3 - 750 kgf, 5 - 3000 kgf

Duramin-650 is the universal tester suited for laboratory use. Each model in the range has a motorized test head and turret, and is available either with a fixed anvil or with a motorized XY-stage and overview camera, primarily suitable for high volume testing. Duramin-650 is available in three load ranges.



- 1 Vertical concept with motorized test head
- 2 8-position automatic turret with overview camera
- 3 Anvil or motorized XY-stage
- 4 Scroll wheel for fine focus
- 5 Mouse or touch screen operated



Brinell Hardness Tester

Duramin-3000

Robust and dependable Brinell hardness testing.

- Robust load-cell based Brinell tester
- Handheld zoom camera for automatic indent evaluation
- Embedded PC, operated by mouse or touch screen
- Wide load range: 62.5 - 3000 kgf

Duramin-3000 is single task Brinell tester. It is a basic, low cost model, but tough enough to withstand the production environment. The machine is designed to handle different sample sizes and shapes. The indent evaluation is carried out with a handheld camera.



- ① Mouse or touch screen operated
- ② Manual indent evaluation (handheld camera)
- ③ Manual Z-axis

Rockwell Hardness Testers

Duramin-150

Robust, reliable and automatic Rockwell hardness testing – immediate accuracy and short cycle time.

- Robust load-cell based Rockwell tester
- High efficiency
- Automatic start function
- Load range 3 - 150 kgf

Duramin-150 is an economic, entry-level Rockwell tester. It is load-cell based, easy to operate and is designed to last, which makes it ideal for production environments.



- ① Touch screen operated
- ② Indenter holder with nose cone
- ③ Manual Z-axis

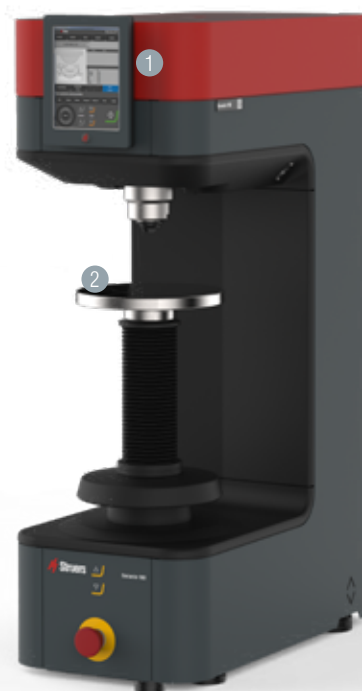
Rockwell Hardness Testers

Duramin-160

Reliable and automatic – premium Rockwell hardness testing.

- High precision load-cell based Rockwell tester
- Embedded PC, operated by touch screen
- Optional motorized Z-axis
- Load range 1 - 250 kgf

Duramin-160 is a high precision Rockwell tester suitable for various sample sizes. It is operated from an integrated touch screen and is optionally available with a motorized Z-axis.



- 1 Mouse or touch screen operated
- 2 Manual or motorized Z-axis

Duramin-170

High capacity Rockwell hardness tester, for large samples or high volume testing.

- High capacity Rockwell tester
- Motorized test head
- Motorized XY-stage (optional)
- Load range 1 - 250 kgf

This is a high capacity Rockwell tester, with a motorized test head and an optional motorized XY-stage. Duramin-170 is particularly suitable for Rockwell testing of large or tall samples or for fully automatic Jominy testing.



- 1 Vertical concept with motorized test head
- 2 Indenter holder with nose cone
- 3 Anvil or motorized XY-stage
- 4 Scroll wheel for fine focus
- 5 Mouse or touch screen operated



5

Struers ApS
Pederstrupvej 84
DK-2750 Ballerup, Denmark

Phone +45 44 600 800
Fax +45 44 600 801
struers@struers.dk
www.struers.com

SINGAPORE
Struers Singapore
627A Aljunied Road,
#07-08 BizTech Centre
Singapore 389842
Phone +65 6299 2268
Fax +65 6299 2661
struers.sg@struers.dk

SPAIN
Struers España
Camino Cerro de los Gamos 1
Building 1 - Pozuelo de Alarcón
CP 28224 Madrid
Teléfono +34 917 901 204
Fax +34 917 901 112
struers.es@struers.es

FINLAND
Struers ApS, Suomi
Hietalahdenranta 13
00180 Helsinki
Puhelin +358 (0)207 919 430
Faksi +358 (0)207 919 431
finland@struers.fi

SWEDEN
Struers Sverige
Box 20038
161 02 Bromma
Telefon +46 (0)8 447 53 90
Telefax +46 (0)8 447 53 99
info@struers.se

UNITED KINGDOM
Struers Ltd.
Unit 11 Evolution @ AMP
Whittle Way, Catcliffe
Rotherham S60 5BL
Tel. +44 0845 604 6664
Fax +44 0845 604 6651
info@struers.co.uk

USA
Struers Inc.
24766 Detroit Road
Westlake, OH 44145-1598
Phone +1 440 871 0071
Fax +1 440 871 8188
info@struers.com

NETHERLANDS
Struers GmbH Nederland
Zomerdijk 34 A
3143 CT Maassluis
Telefoon +31 (10) 599 7209
Fax +31 (10) 5997201
netherlands@struers.de

NORWAY
Struers ApS, Norge
Sjøskogenveien 44C
1407 Vinterbro
Telefon +47 970 94 285
info@struers.no

AUSTRIA
Struers GmbH
Zweigniederlassung Österreich
Betriebsgebiet Puch Nord 8
5412 Puch
Telefon +43 6245 70567
Fax +43 6245 70567-78
austria@struers.de

POLAND
Struers Sp. z o.o.
Oddział w Polsce
ul. Jasnogórska 44
31-358 Kraków
Phone +48 12 661 20 60
Fax +48 12 626 01 46
poland@struers.de

ROMANIA
Struers GmbH, Sucursala Bucuresti
Str. Preciziei nr. 6R
062203 sector 6, Bucuresti
Phone +40 (31) 101 9548
Fax +40 (31) 101 9549
romania@struers.de

SWITZERLAND
Struers GmbH
Zweigniederlassung Schweiz
Weissenbrunnstraße 41
CH-8903 Birmensdorf
Telefon +41 44 777 63 07
Fax +41 44 777 63 09
switzerland@struers.de

GERMANY
Struers GmbH
Carl-Friedrich-Benz-Straße 5
D- 47877 Willich
Telefon +49 (0) 2154 486-0
Fax +49 (0) 2154 486-222
verkauf@struers.de

FRANCE
Struers S.A.S.
370, rue du Marché Rollay
F-94507 Champigny
sur Marne Cedex
Téléphone +33 1 5509 1430
Télécopie +33 1 5509 1449
struers@struers.fr

HUNGARY
Struers GmbH
Magyarország Fióktelep
Tatai út 53
2821 Gyermely
Phone +36 (34) 880546
Fax +36 (34) 880547
hungary@struers.de

IRELAND
Struers Ltd.
Unit 11 Evolution@ AMP
Whittle Way, Catcliffe
Rotherham S60 5BL
Tel. +44 0845 604 6664
Fax +44 0845 604 6651
info@struers.co.uk

ITALY
Struers Italia
Via Monte Grappa 80/4
20020 Arese (MI)
Tel. +39-02/38236281
Fax +39-02/38236274
struers.it@struers.it

JAPAN
Marumoto Struers K.K.
Takanawa Muse Bldg. 1F
3-14-13 Higashi-Gotanda,
Shinagawa
Tokyo
141-0022 Japan
Phone +81 3 5488 6207
Fax +81 3 5488 6237
struers@struers.co.jp

AUSTRALIAN & NEW ZEALAND
Struers Australia
27 Mayneview Street
Milton QLD 4064
Australia
Phone +61 7 3512 9600
Fax +61 7 3369 8200
info.au@struers.dk

BELGIUM (Wallonie)
Struers S.A.S.
370, rue du Marché Rollay
F- 94507 Champigny
sur Marne Cedex
Téléphone +33 1 5509 1430
Télécopie +33 1 5509 1449
struers@struers.fr

BELGIUM (Flanders)
Struers GmbH Nederland
Zomerdijk 34 A
3143 CT Maassluis
Telefoon +31 (10) 599 7209
Fax +31 (10) 5997201
netherlands@struers.de

CANADA
Struers Ltd.
7275 West Credit Avenue
Mississauga, Ontario L5N 5M9
Phone +1 905-814-8855
Fax +1 905-814-1440
info@struers.com

CHINA
Struers Ltd.
No. 1696 Zhang Heng Road
Zhang Jiang Hi-Tech Park
Shanghai 201203, P.R. China
Phone +86 (21) 6035 3900
Fax +86 (21) 6035 3999
struers@struers.cn

CZECH REPUBLIC & SLOVAKIA
Struers GmbH Organizační složka
v deckotechnický park
P. ělepská 1920,
CZ-252 63 Roztoky u Prahy
Phone +420 233 312 625
Fax +420 233 312 640
czechrepublic@struers.de
slovakia@struers.de

Ensuring Certainty

With offices and affiliates in 24 countries and a presence in more than 50 countries worldwide, Struers is the world's leading materialographic solution supplier. We are dedicated to enabling our customers to ensure certainty in all aspects of materialographic preparation and testing as well as material hardness testing - wherever they are in the world. Struers offers a complete range of equipment, consumables, service and training programmes – all supported by the most comprehensive knowledge base, global applications support and a certified global service set-up.

Learn more

Contact a Struers sales representative today or visit www.struers.com